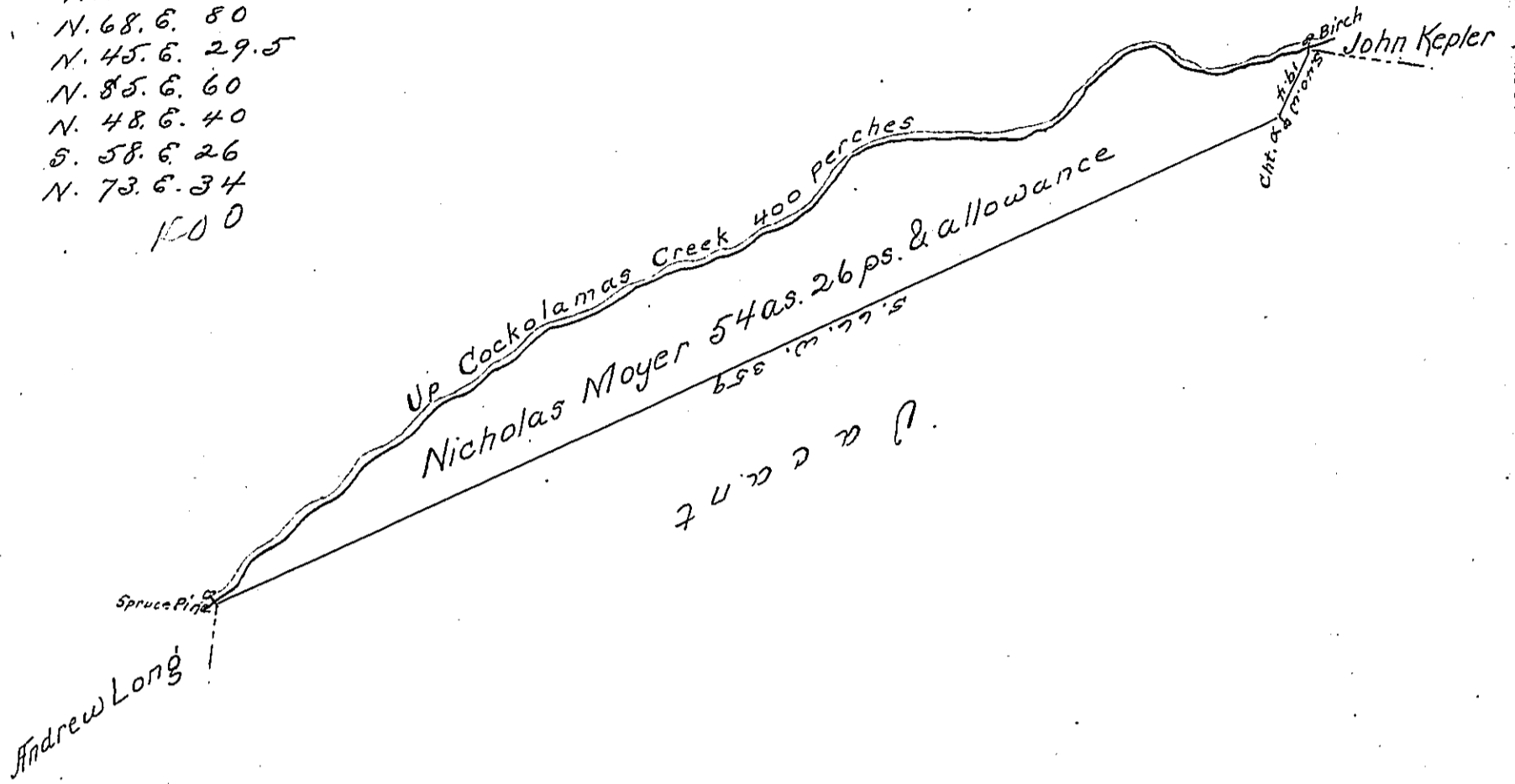


Courses & Distances
of the Creek

N. 51. E. 130.5
 N. 68. E. 80
 N. 45. E. 29.5
 N. 85. E. 60
 N. 48. E. 40
 S. 58. E. 26
 N. 73. E. 34
 1000



The Draught of a tract of land situate in
 Greenwood Township Cumberland County contain-
 ing fifty four acres twenty six perches and allowance
 of six percent for roade &c. Surveyed Augt. 17th. 1793 in
 pursuance of a Warrant granted to Nicholas Moyer
 October 15th. 1792

By Sam Lyon D.S.

To Daniel Brodhead Esqr. }
 Surveyor General }

IN TESTIMONY that the above is a copy of the original remaining on file in
 the Department of Internal Affairs of Pennsylvania, made
 conformably to an Act of Assembly approved the 16th day of
 February, 1833, I have hereunto set my Hand and caused
 the Seal of said Department to be affixed at Harrisburg,
 this sixth day of October 1903

James P. Brown
 Secretary of Internal Affairs.